

76010-VP

Trench Drain

12" Wide, Rectangular

Specification

Josam 76010-VP series coated cast iron rectangular sectional trench drain with heavy-duty body sections and integral anchor flange, heavy-duty loose-set grates, bottom outlet inside-caulk connection and vandal proof screws.

Slot width 2-3/4" x 7/16" (-1 & -2 slot width 2-3/4" x 7/16").

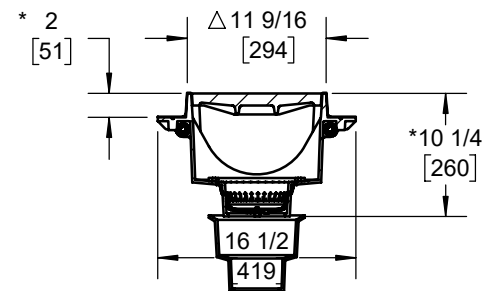
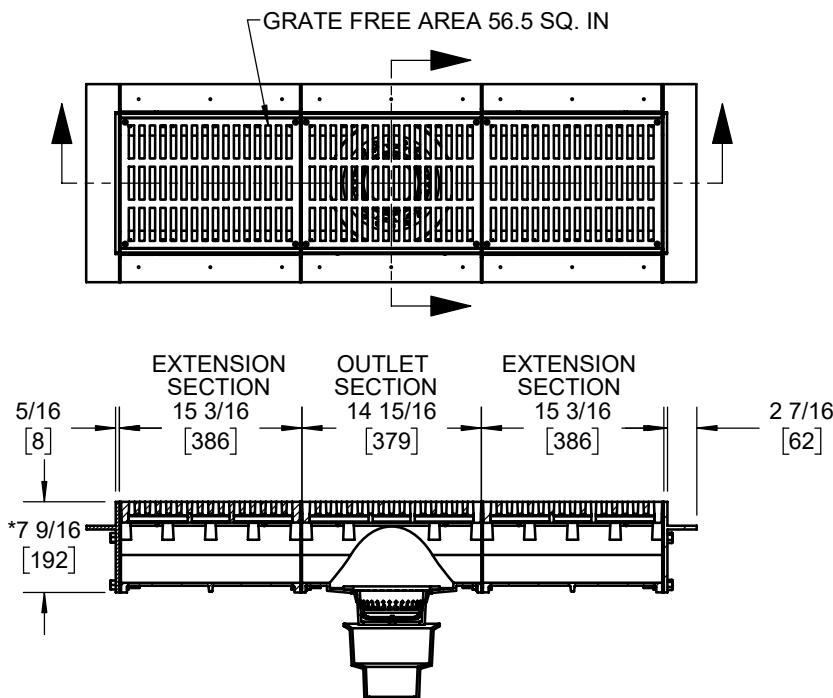
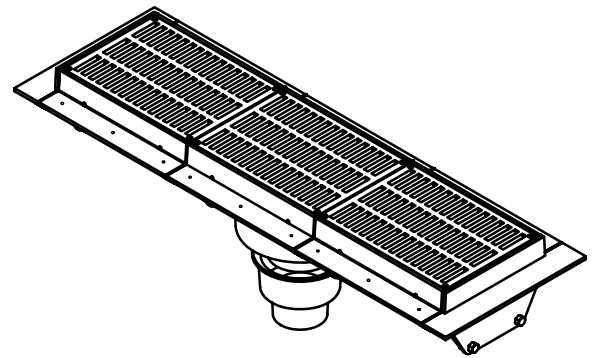
9/32 weepholes standard on all sections.

It is recommended that no more than eight (8) extension sections be used with one (1) outlet section.

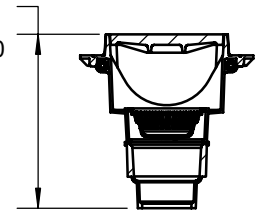
* Add 1/4" for nikaloy or bronze top.

△ Add 3/8" to width & overall length for nikaloy or bronze top.

-70 Sediment bucket cast iron option shown.



*13 1/2
HEIGHT OF 6" -70
*16 9/16
[421]
HEIGHT OF 3" -70
AND 4" -70



OPTIONS

	-EXT	Extension section
	-1	Satin finish nikaloy top
	-2	Satin finish bronze top
	-7	Ductile iron grate
	-11	Convex grate
X	-VP	Secured grate, vandal-proof screws

	-30	Flashing clamp device
	-40	Galvanized cast iron parts
	-70	Sediment bucket, cast iron
	-40-70	Bucket, galvanized
	-ARE	Acid resistant epoxy coating

Product is non-cancellable and non-returnable

Name: _____

Signature: _____

Date: _____

Pipe Size

3"

4"

6"

Josam product specifications in U.S. customary units are approximate and provided for reference only. For precise measurements, please contact Josam Technical Support. Josam reserves the right to change or modify product design, construction, specifications, or materials without prior notice and without incurring any obligation to make such changes and modifications on Josam products previously or subsequently sold.

Notes:

JOSAM®

A WATTS Brand